



ferag...

ferag.doWarehouse

The Unified Control System
for the Future Warehouse

#perfectmatch

More information can be found online:



ferag.doWarehouse

ferag.doWarehouse offers an uncomplicated and customized solution for companies of any size and complexity. Digitalization in the warehouse is „growing and scalable“, similar to the hardware systems themselves.

ferag.doWarehouse is a WMS/WES with best in class hardware abstraction and optimisation for highly flexible and easy integration to SOC/PLC layer.

ferag.doWarehouse manages the warehouse and optimally aligns warehouse management with existing and future warehouse automation. An essential factor in terms of time and cost efficiency, as new and existing hardware can be adapted to the existing/required processes in the best possible way, knowing that ferag.doWarehouse can connect and control them effortlessly.

The software takes on three levels of functionality to meet different requirements and degrees of automation:

- Simple manual warehouses
- Complex automated warehouses
- Critical warehouse subsystems.

What is a Unified Control System?

ferag.doWarehouse is a smart software solution for warehouse management that combines different systems such as WMS, WCS and WES and standardizes the interfaces of incoming and outgoing processes in a warehouse. It simplifies the management of information from the PLC including robots, WMS, WCS and WES and offers all functions in one place. It also establishes a connection to WMS functions.

ferag.doWarehouse can manage one, some or all warehouse processes

ferag.doWarehouse monitors inventory, processes returns, optimizes scheduling and monitors manual tasks as well as quality control. The solution acts as a central conductor, seamlessly uniting different systems and processes under a single software suite. This allows warehouse processes to be designed and synchronized more efficiently via a single interface.

ERP – For enterprise resource planning, which organizations use to manage and integrate key business areas such as finance, supply chain, operations, reporting, manufacturing and human resources.

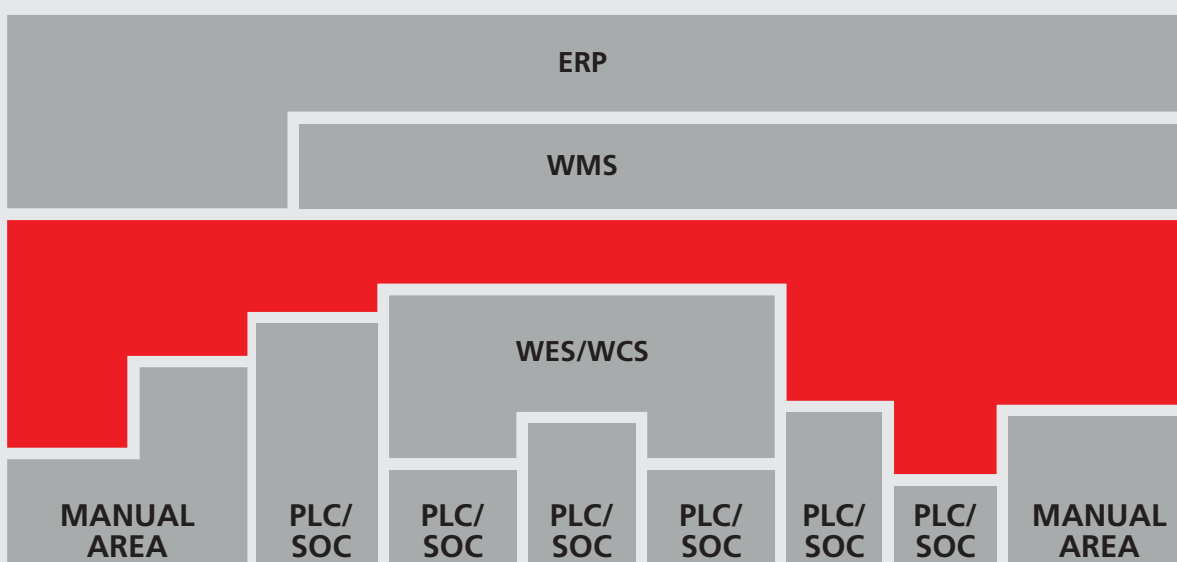
PLC/SOC – Controls machines such as robotics and sorting devices etc.

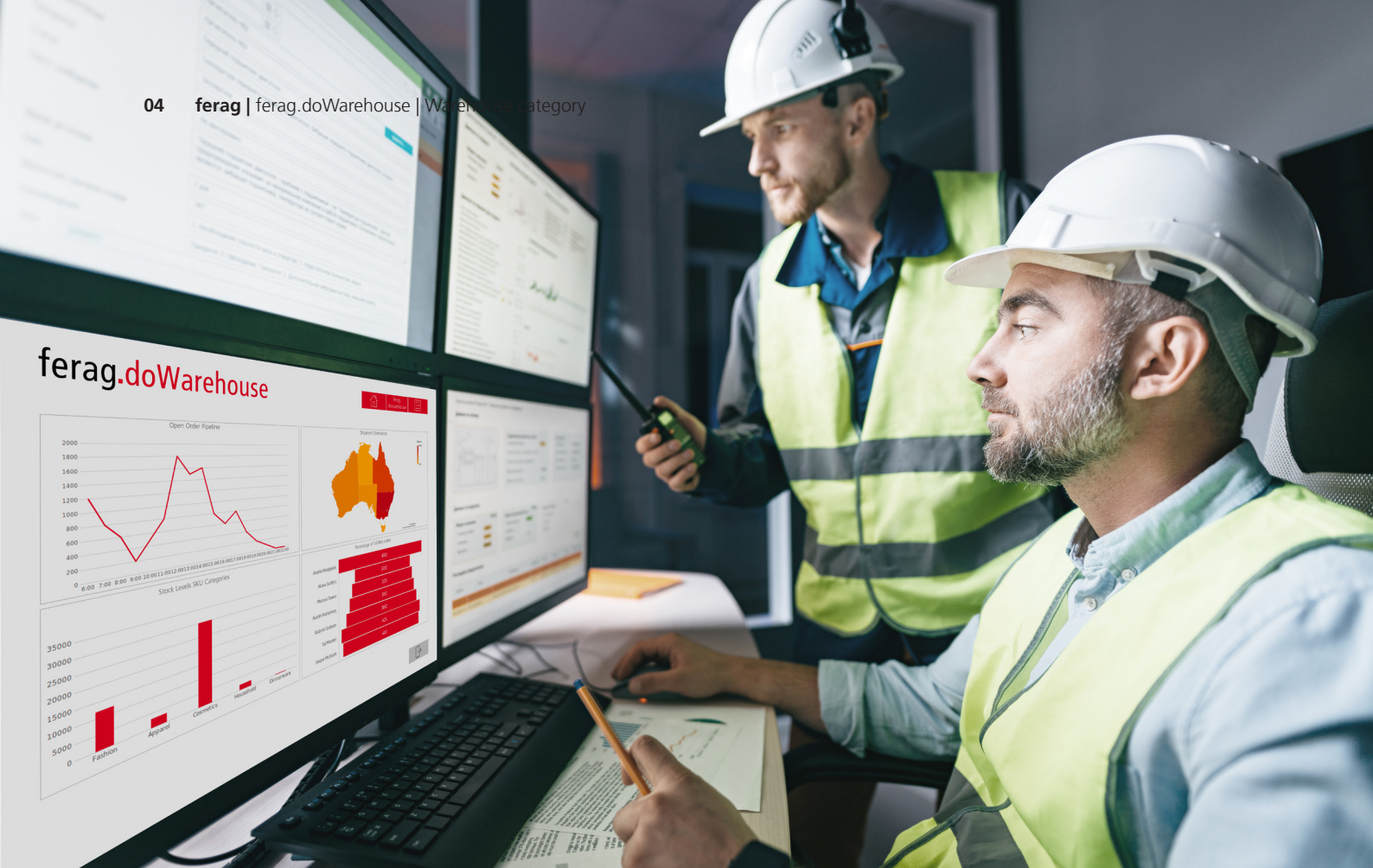
WMS – Responsible for inventory management, optimization and tracking of goods through the warehouse.

WCS – Responsible for controlling the movements of automated systems, such as order control on conveyor belts, sorting, call-off systems and automated storage systems.

WES – Responsible for automation control, order processing and balancing workflows.

UCS – Comprehensive platform that orchestrates and optimizes all warehouse operations from inventory management to order processing under a single user interface.





Which category warehouse do you fit into?

Manual Warehouse

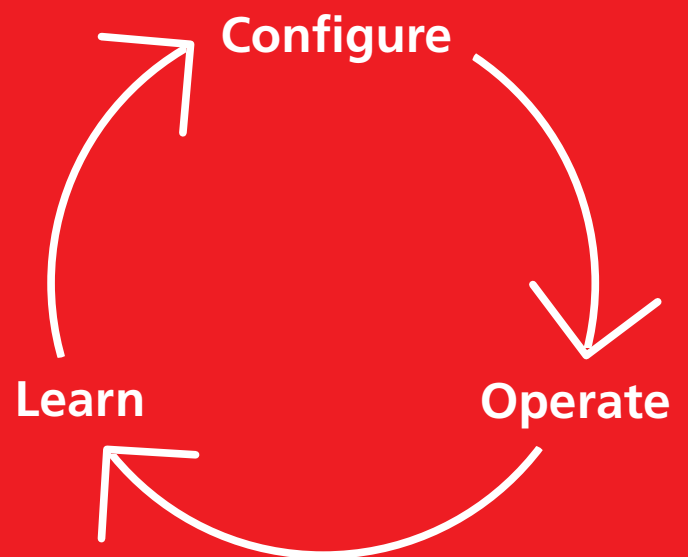
Requires oversight of manual processes and the path for future growth towards automation and WMS functionality.

Critical Warehouse Subsystem

Requires the management of one or more critical automatic or manual processes.

Complex, Automated Warehouse

Requires a unified view of all processes.



Manual warehouse

ferag.doWarehouse is the perfect solution to easily and efficiently transition to a sophisticated warehouse management solution. You no longer have to struggle with spreadsheets, stock-outs, orders or lack of visibility in your warehouse.

ferag.doWarehouse gives you the functionality of a WMS while managing your processes and providing you with information on resource efficiency and visibility in your warehouse. The advanced analytics allow you to focus on problems, inefficiencies and bottlenecks to maximize the efficiency of your warehouse.

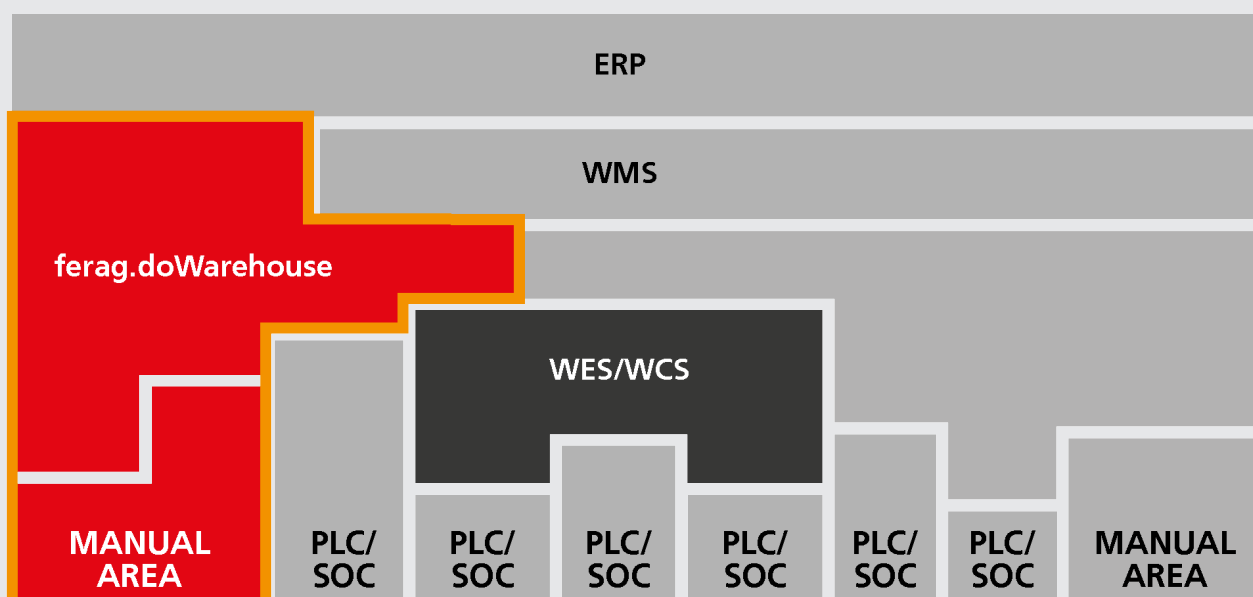
All of these features provide you with a platform for developing sophisticated automation and a multi-site system.

Adaptability for operational flexibility

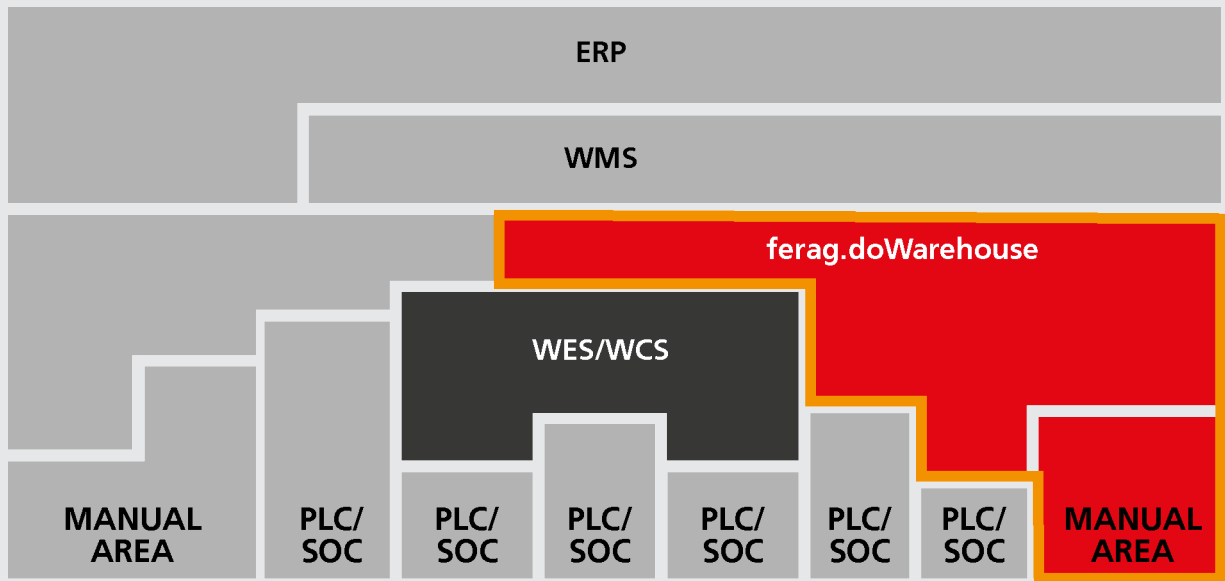
With ferag.doWarehouse, you do not have to adapt your established processes to the software. This leads to greater user acceptance during implementation. It also gives you the opportunity to adapt new processes as your business evolves to meet changing requirements. For example, when moving from a retail store to an online platform or when introducing automated processes.

With ferag.doWarehouse, you can make workflow adjustments yourself and adapt dynamically to the needs of your company. This leads to considerable time and cost savings and at the same time increases flexibility within the company.

ferag.doWarehouse UCS - Manual Warehouse



Critical warehouse subsystems



ferag.doWarehouse UCS - Critical warehouse subsystems

Need to manage a critical automated and/or manual subsystem?

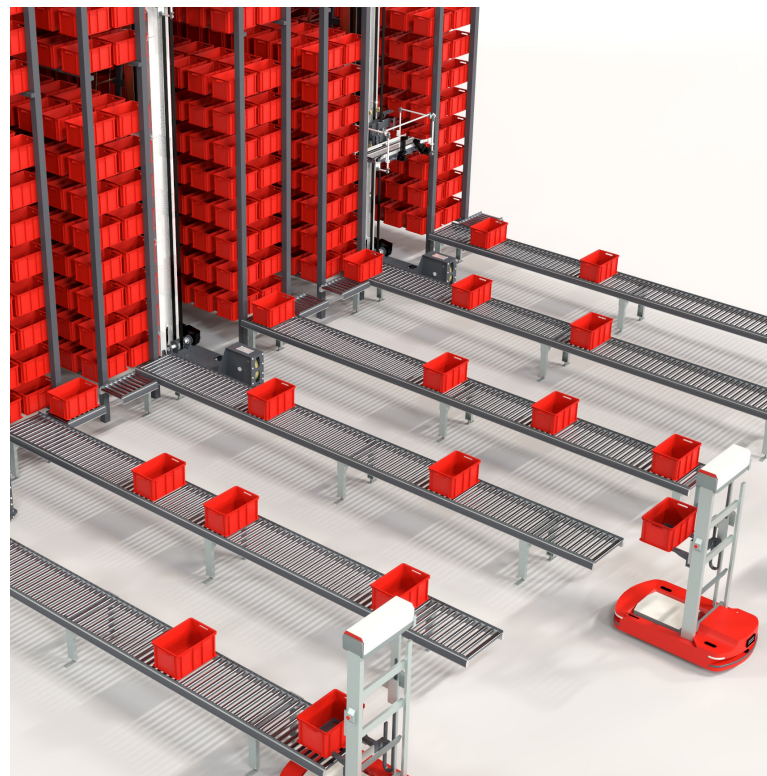
ferag.doWarehouse can deliver all the benefits above, as well as, delivering effortless control over critical automated and/or manual warehouse subsystems such as sorting, overstock or commissioning areas ensuring optimum automation hardware usage for a specific warehouse area.

The software solution ensures optimal utilization of your automation hardware without compromising on functionality. Seamless integration and analytics enable easy set-up and continuous monitoring and visibility



Agnostic in terms of hardware

Regardless of the hardware, ferag.doWarehouse allows you to connect and manage any system via a central dashboard. This means that you are not tied to a single hardware provider. You can flexibly use the latest innovations and equip your warehouse for the future.



Complex Automated Warehouse

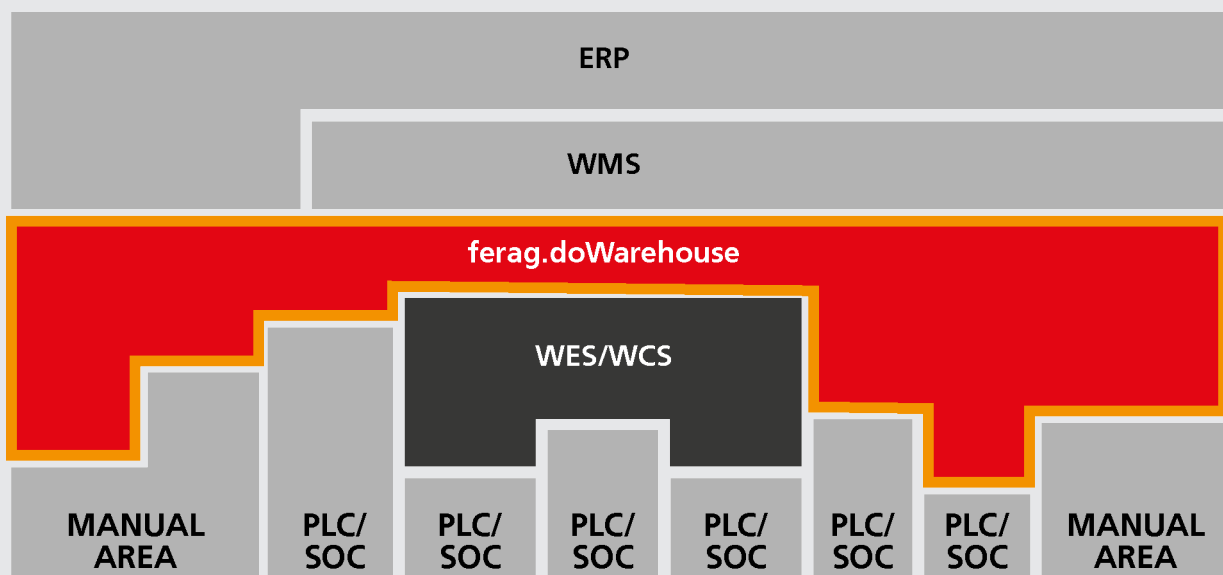
For warehouses with extensive automated processes, doWarehouse offers all the advantages mentioned above. It unifies the WES/WCS level to create an integrated platform for all subsystems, resulting in a single source of integration. The high customizability and modularity of doWarehouse enable seamless integration with both hardware and software systems, ensuring easy implementation and continuous functionality.

Single Source of Truth

At the core of ferag.doWarehouse is a central information hub that acts as the ultimate source of truth. This hub serves as a unified warehouse for all your operational data, hardware and software. It can be seamlessly integrated with business intelligence and enterprise resource systems. You no longer have to switch back and forth between different systems to find orders, monitor inventory, check status, evaluate station efficiency, monitor hardware or generate reports. With doWarehouse, you have all the information you need at your fingertips.

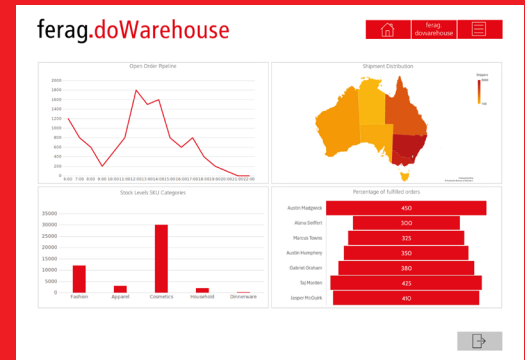
With an integrated user management system, a single point of access, a single interface and centralization of your data, you can streamline your workflow. You don't need to create different reports or familiarize yourself with different systems to keep track of your warehouse activities. doWarehouse covers all warehouse processes.

With its holistic approach, ferag.doWarehouse provides a comprehensive 360-degree view of your order fulfillment while supporting your hardware and software systems in an unparalleled way. It's all about maximizing efficiency and ease of use and simplifying the management of your warehouse.



No matter what stage you are at on the journey to warehouse automation, doWarehouse can provide a foundation for unparalleled integration and unification to deliver a holistic picture of your warehouse, providing a 360-degree view of orders. Real-time analytics, hardware agnosticism and configurability, all based on the latest technologies, make doWarehouse the ideal choice for efficiency, cost optimization and maximum throughput.

ferag...



Meaningful dashboards are key when operating a busy warehouse. As part of the implementation process, we will configure dashboards to your unique requirements to help you make timely decisions based on the right information.

Additional functions

Ferag support

Simplify your support experience with Ferag as your first level support. Benefit from the convenience of a single contact number, a single email address and a single service level agreement to meet all your support needs.

You choose your infrastructure

On-premise, hybrid or cloud implementation. The hybrid implementation will have the database and business logic in the cloud and the machine handling equipment controllers on premises.

Licencing

Based on sites with unlimited users, pricing is a monthly subscription model with support included for ease of cost justification.

ferag.doMobile

You can keep up with the latest advancements in warehouse technologies with support for RF terminals, touch screens, voice activation, augmented reality support.

Replenishment

Data-driven balancing of inventory levels to meet order demand while minimising carrying costs and storage space requirements.

Dashboarding

Real time dashboarding and reporting that matter for your warehouse operations.

Interactive task management screen

Automatic generation of tasks for supervisors and a sophisticated alert system that highlights and prompts action on issues requiring attention, ensuring maximum operational efficiency.

