

ferag.starlift Options



Magnetic badge Reader



EKS Reader



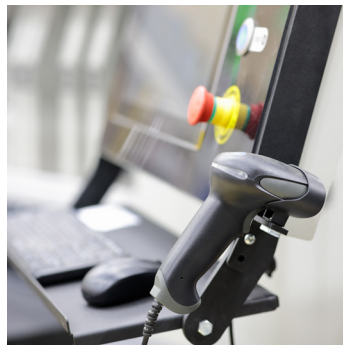
Laser Pointer



End Picking Button



Put to Light



1D or 2D Barcode Leser



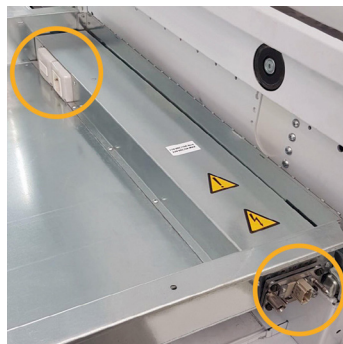
Sliding console



External bay lighting



Automatic door



Electrified tray

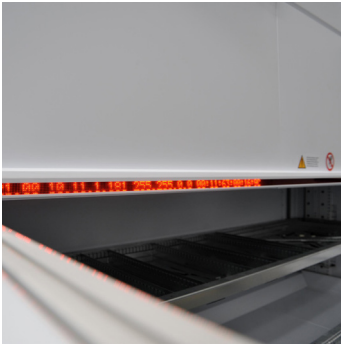


Foot bar task complete



RFID Reader





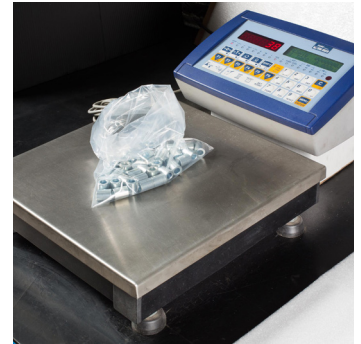
LED bar



ESD protection system



Label printer



Counting scale



Telescopic bay



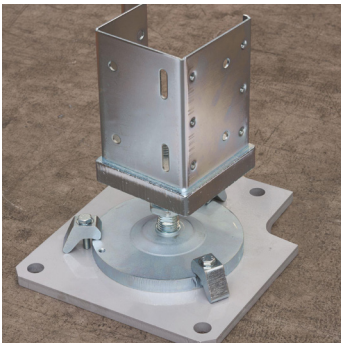
Trolley



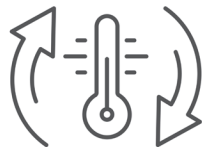
Picking cart



Tray accessories



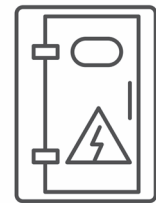
Weight distribution plates



Temperature control



Sprinkler predisposition



Remote electrical panel

ferag.starlift is ideal for those who also need complete integration with other technologies such as:

- Robots
- Roller conveyor
- Put-To-Light systems
- Manipulators
- Zero Weight cranes

You can configure the Modula in different ways depending on how you plan to use it, with different types of picking bays.

- Single bay
- Internal bay
- Opposite bay
- Double bay
- External bay
- Displaced bay.

